

# Planmeca ProMax<sup>®</sup> 3D s

*for endodontics*



ENGLISH

**PLANMECA**

# Perfect visualisation of even the finest details

Our **Planmeca ProMax® 3D s** X-ray unit has been designed for capturing even the smallest of anatomical details with precision. High-resolution images, efficient artifact removal and excellent patient support make the unit an ideal choice for versatile endodontic cases.

## New endodontic imaging mode

- Extremely high resolution with 75 µm voxel size
- Perfect for the smallest details, enables precise diagnostics and treatment planning

## Optimal volume sizes

- Ø50 x 50 mm
- Ø50 x 80 mm

## Noise-free images

Intelligent **Planmeca AINO™** 3D noise filter removes noise from CBCT images without losing valuable details

## Artifact-free images

**Planmeca ARA™** artifact removal algorithm efficiently removes shadows and streaks – caused by e.g. metal and root fillings – from the 3D image

## Ideal patient support

- The adjustable patient support keeps the patient firmly and comfortably in place
- Guarantees high-quality images without artefacts caused by movement

## Comprehensive Planmeca Romexis® software

Offers versatile tools for endodontic diagnostic and treatment planning needs, such as true measurements and 3D visualisation of root canals

## CBCT applications in endodontics:

- Assessment of endodontic treatment complications
- Diagnosis of periapical pathosis
- Root canal system anomalies
- Determination of root curvature
- Trauma diagnosis: root fractures, luxation, displacement of teeth and alveolar fractures
- Localisation of root resorption
- Determination of exact root apex location in presurgical planning

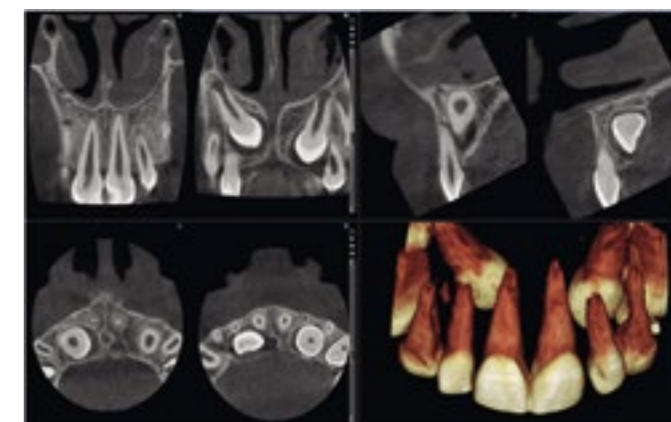
Mac OS and Windows compatible with Planmeca Romexis® software

## A true all-in-one unit

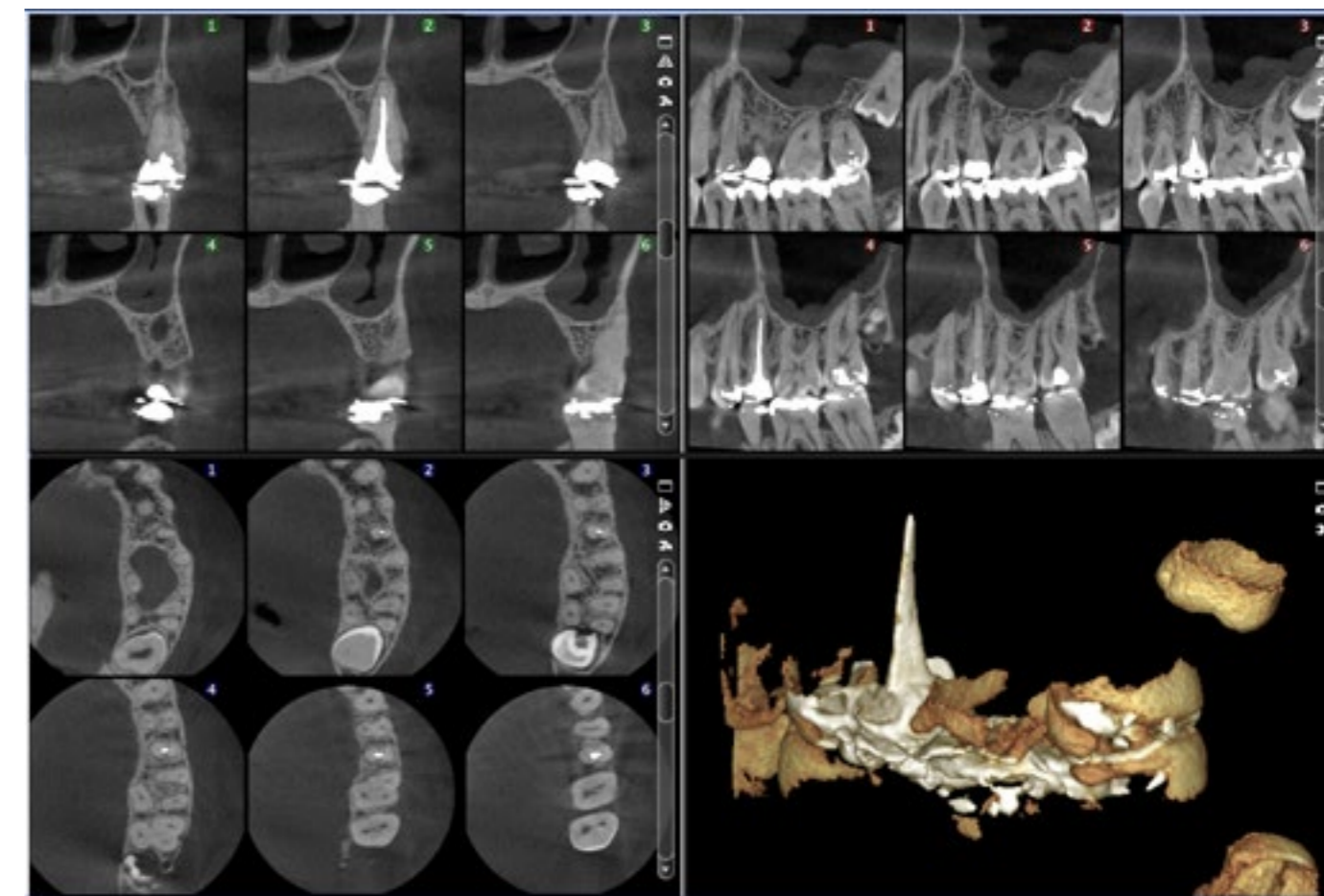
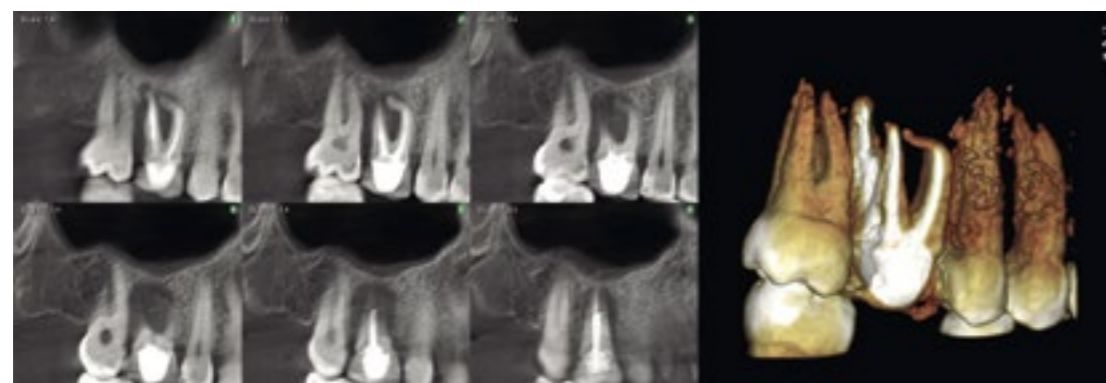
- CBCT imaging
- Multi-layered 2D **SmartPan™** panoramic imaging
- Cephalometric imaging
- **Planmeca ProFace™** 3D face photo

## Ultra Low Dose™ protocol

- Enables CBCT imaging with even less radiation dose than traditional 2D panoramic imaging



Ultra Low Dose™ protocol. Effective patient dose 14.4 µSv.



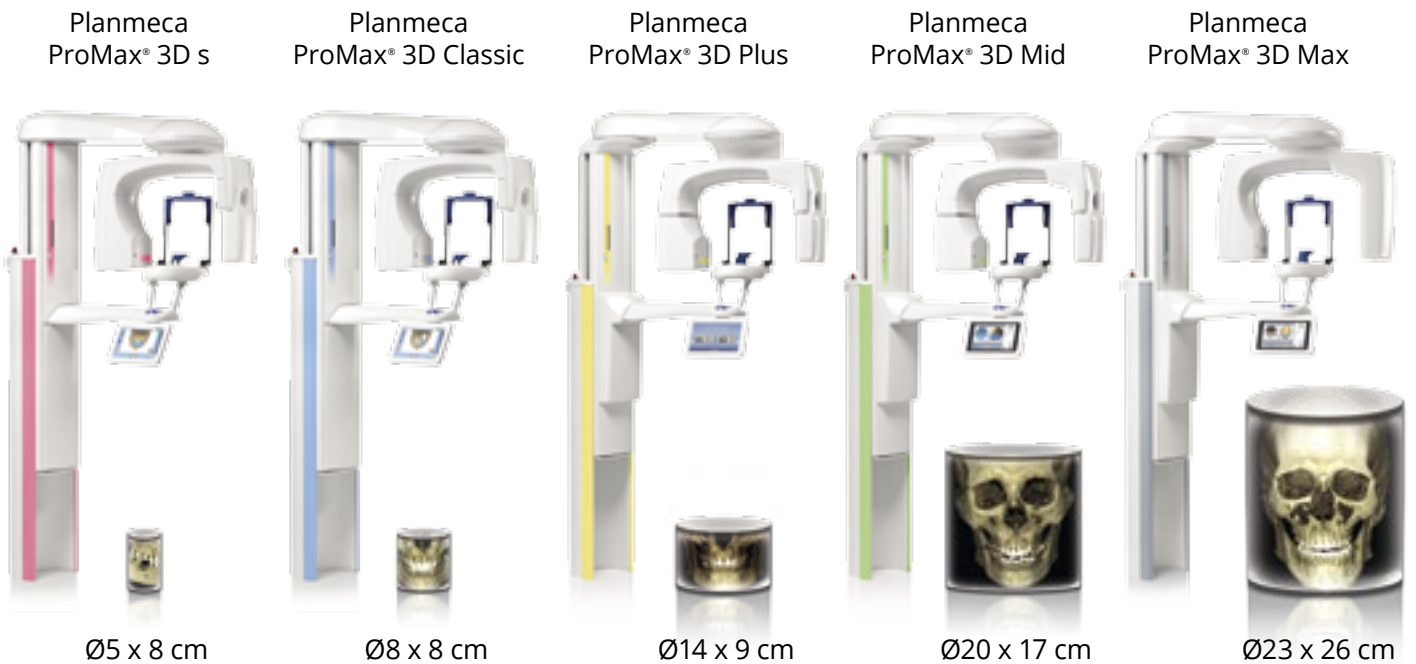
## Dental programs

	Volume size (child mode)	Voxel size, isotropic
Tooth	Ø50 x 50 mm (Ø42 x 42 mm)	75 µm, 100 µm, 150 µm, 200 µm, 400 µm
	Ø50 x 80 mm (Ø42 x 68 mm)	100 µm, 150 µm, 200 µm, 400 µm
Teeth	triple scan: 90 x 60 x 80 mm	150 µm, 200 µm, 400 µm

## Imaging modes

	Voxel size, isotropic
Low dose	400 µm
Normal	200 µm
High definition	150 µm
High resolution	100 µm
Endodontic	75 µm

## Meet the Planmeca ProMax® 3D family



Planmeca Showroom



infokit.planmeca.com



Planmeca iRomexis™



# PLANMECA

Asentajankatu 6 | 00880 Helsinki | Finland | tel. +358 20 7795 500 | fax +358 20 7795 555 | sales@planmeca.com | www.planmeca.com

Images may contain optional items not included in standard delivery. Available configurations and features may have country or area specific variations. Some products displayed above may not be available in all countries or areas. Rights for changes reserved.

Planmeca, All in one, Anatomat Plus, Cobra, Comfy, Digital perfection, Economat Plus, Elegant, Flexy, Perio Fresh, PlanEasyMill, Planmeca ARA, Planmeca Chair, Planmeca Compact, Planmeca Intra, Planmeca iRomexis, Planmeca Lumion, Planmeca Minea, Planmeca Minendo, Planmeca Minetto, Planmeca Noma, Planmeca Online, Planmeca PlanCAD, Planmeca PlanMill, Planmeca PlanScan, Planmeca Planosil, Planmeca ProCeph, Planmeca ProFace, Planmeca ProLED, Planmeca ProMax, Planmeca ProModel, Planmeca ProOne, Planmeca ProScanner, Planmeca ProSensor, Planmeca ProX, Planmeca Romexis, Planmeca SingLED, Planmeca Sovereign, Planmeca Ultra Low Dose, Planmeca Vision, Planmeca Waterline Cleaning System, Proline Dental Stool, Saddle Stool, SmartPan, SmartTouch, Trendy, Ultra Relax and UltraTouch are registered or non-registered trademarks of Planmeca in various countries.

